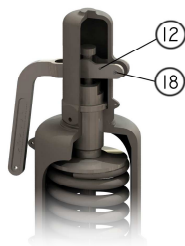


Lifting device



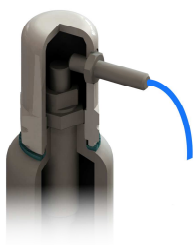
Manual lifting device.
Steam service must have lifting device.

Test gag



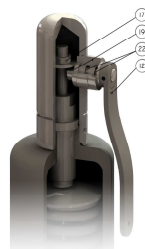
To test pressure of the installation.
After testing test gag must be removed.
Test gag is possible for safety transport of the valve.

Lift indicator



Proximity switch and valve position indicator.
Inductive prox 3-wire switching type
Supply voltage 20 to 264 VAC, 50/60 Hz.
Enclosure ratings IEC 144 IP67
Option Eex / ATEX

Packing lever



Manual lifting device.
This system to ensure that the fluid do not escape to the atmosphere.

Nozzle ring/Blowdown ring



To help the control flow capacity.
Adjustable blowdown

Specials spring



Carbon steel	120° C
Chrome Vanadium	219° C
S.S. AISI.302	260° C
Inconel X-750	500° C

Bellows



To protect:
Constant back pressure
Variable back pressure
Material: S.S. AISI-316TI
Available for back pressure between 10% and 35% of the set pressure with set pressure min. 2 barg

ECTFE coating



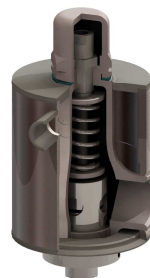
ECTFE powder coating for corrosion protection
Very good chemical and thermal resistance and purity
100% ECTFE coating
Trims ECTFE coating

Stellite in the seat



In PN-63, PN-100
ANSI600, 900, 1500 & 2500

Heating Jacket



Areas of application are systems to be protected from media which are viscous and have tendency to crystallise.
Material: S.S. AISI-316L